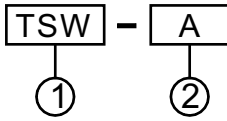


MODEL DESIGNATIONS



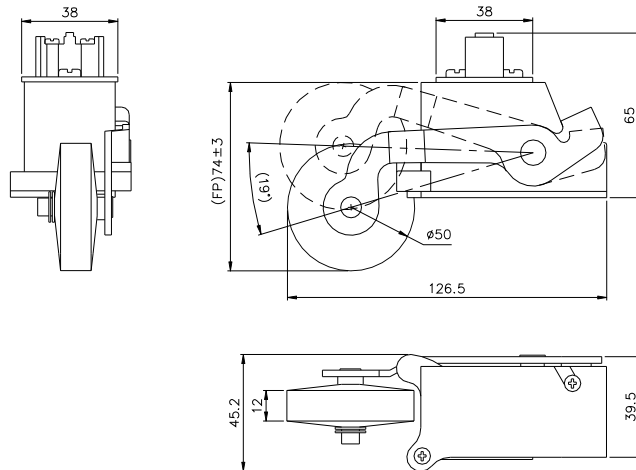
Designation	Signal	Description
1. Type	TSW	Elevator switch
	TSW2	Decelerate switch
2. Contact Blocks	A	1a
	B	1b

CHARACTERISTICS

Characteristic	Type	TSW	TSW2
Contact resistance		50m max.	
Insulation resistance		100M max.(at 500VDC)	
Dielectric resistance		2000VAC, 50/60Hz 1minute	
Ambient temperture		-10°C~80°C	
Ambient humidity		45%~80%RH	
Operation force		1Kgf max.	300gr max.
Weight		Approx 250gr	Approx 350gr
Pretravel		8mm max.	45°±5°
Overtravel		25mm max.	23°±5°
Free position		74±3mm	

DIMENSIONS

TSW



ZF TVS Part No	TSW-A(NO), TSW-B(NC)
Current Rating	5 A
Operating Voltage	250 VAC
Mechanical Life	1,000,000 Cycles
Electrical Life	500,000 Cycles
Roller Material	NBR rubber (replaceable)
Contact Material	AgCdO
Terminal Material	Brass
Case Material	Phenolic
Outer Metal Part Material	Steel
Initial Contact Resistance	50 mΩ max
Approvals	CSA